

CF60 Ultra Rugged Marine PC System

Ultra Compact
Ultra Low Power
Consumption &
12V DC Operation

The first, affordable solid state Windows PC for the marine market now available....

- Compact marine PC with powerful Intel M 1.5 GHz processor
- 12v DC direct operation with low power consumption (<1.5A)
- Measures just 185 x 60 x 255mm
- Full range of connectivity options including USB, IEEE1394, 10/100 MB LAN and audio in-out.
- 512MB DDR 333MHz RAM expandable to 1GB
- Solid state (no moving parts) hard drive for unbeatable reliability
- CDRW/DVD ROM
- Built in Intel graphics for fast electronic charting presentation
- Matching range of LCD monitors and accessories
- 2 year warranty



The CF60 uses a patented solid state FLASH hard drive for exceptional reliability and performance

The CF60 from Digital Yacht measures just 185 x 60 x 255mm and runs directly from your 12V on board power system. It boasts a powerful Intel M processor, 512MB RAM and a solid state FLASH hard drive with CDRW/DVD drive and full range of interfaces.

With its minuscule dimensions, the CF60 is small enough to fit on any boat but boasts a powerful Intel M 1.5GHz processor, 512MB RAM and a ultra rugged solid state flash 16GB hard drive - plus a DVD/CDRW drive to install the latest applications. It's powered directly from your boat's 12V DC battery power with no complex and power hungry DC-AC inverter required.

The use of a unique solid state NAND flash hard drive means there are no moving parts (other than the CD drive) and there's also no fan as the unit is passively cooled through its patented and sturdy heat-sink case. This system greatly improves reliability even in the hostile marine environment.

The economics also make sense - with one product capable of offering navigation, communication and entertainment functions at an incredibly attractive price.

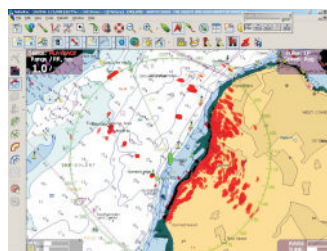
GPS105 GPS Sensor

The optional GPS105 is a high performance 12 channel WAAS/EGNOS enabled GPS. Thanks to an advanced receiver, typical accuracies are 3-5m. It's the perfect GPS sensor for any PC based electronic charting or nav system and has a direct NMEA 0183 output. Also available is the GPS110 with a USB style connection

Plus, we've added all the connectivity you need with USB, Firewire/IEEE1394a, RS232/NMEA serial, 10/100MB network, stereo sound and VGA monitor capability so your CF60 stays at the forefront of technology. Digital Yacht - serious technology and serious value!

Typical System Price
CF60 with 512MB ram and Win XP Home operating system. 16GB solid state drive - optional external storage Great Value! Call for other options

RRP £999.95 Inc Vat



Navigation

Digital Yacht PCs are the ideal partner for popular electronic chart programs from Nobeltec, Raymarine, Maptech, Euronav, Furuno and Maxsea. We can pre-install charting software and electronic charts for an out of the box, plug and play solution. We've also solutions for radar, AIS, NMEA 2000 monitoring, satellite communications, on board e-mail and much more...

And Add Radar Too With Nobeltec....

The CF60 forms the ideal PC processor for Nobeltec's range of PC based radar and electronic charting systems. A 2kw 20" radar-plotter system starts from just £1595 inc vat turning your CF60 into a powerful multi function device. Call for catalogue



PROCESSOR:

Intel M 1.5GHz

MEMORY:

512MB 333MHZ DDR

HARD DRIVE:

16GB solid state FLASH drive

OPTICAL:

16X DVD CD/RW DRIVE

GRAPHICS:

ONBOARD INTEL

CONNECTIVITY:

Screen rotation function 64MB

1 X 9 PIN SERIAL

1 x Ethernet 10/100MB

3 X USB 2

1 X 1394

1 X VGA

KEYBOARD & MOUSE

SOUND IN/OUT (Stereo)

185 X 60 X 255MM

MEMORY TO 1GB

EXT HARD DRIVE TO 500GB

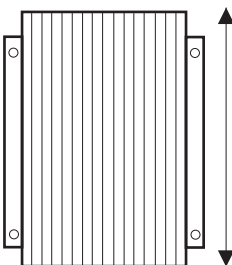
Full range of accessories from satellite modems, displays, software, GSM communication devices and keyboards available. Please ask for our full price list.

The CF60 is delivered with Windows XP Home operating system. Vista and XP Pro available as options

Specifications can change so please contact us prior to ordering

PHYSICAL:

OPTIONS:



255mm

185mm